

ROLLOVER MESH GUARDING

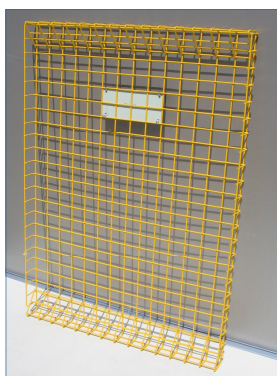


Adwest Group has the capability to produce 'rollover' mesh safety guards with distinctive features detailed in these images.

Although this type of guard has many applications they are typically used to provide protection from moving mining machinery/equipment and conveyors.

The key point to note is that the Double Bend (C) at the top and bottom of the guard finishes with a complete bar of mesh. This has the following advantages:

- It provides a stronger guard.
- It provides a safer edge to the guard because no wires will be able to return through the front of the guard.

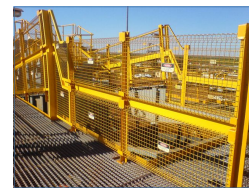
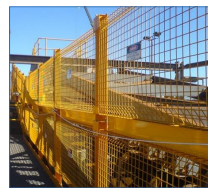


Adwest Group uses a combination of Press Brake and an innovative 'Screw Bender' for this manufacturing process.

This proven manufacturing technology has been successfully used on projects for large mining companies.

In addition to the 'rollover' guards the Company has the ability to produce:

- Mesh guards with light angle frames
- Mesh guards with tubular frames
- Gating
- Access Doors
- Bearing Guards
- Rock Mesh Guards
- Guard and Gate Posts



We are able to provide guards in bare metal form. Alternatively we can provide guards finished to customer paint specifications. The 'rollover' guards shown here are powder coated with 'Dulux E-Prime' Primer specifically formulated for galvanised surfaces with a top coat of 'Dulux Alphatec MX2' high gloss powder coating in 'Safety Yellow' (Y14).

We can also provide Danger and Warning signs to Australian Standard AS1319 securely fitted with stainless steel cable ties.



Adwest Group is a multi-million dollar fabrication company with an impressive list of blue-chip customers. Our capabilities of Structural Steelwork to Light Fabrication and a wide range of Wire and Mesh products allow us to service a diverse range of industries.

A dedicated and highly experienced work force pride themselves in the quality of their work and the prestigious list of customers including BHP, Rio Tinto, Alcoa, Monadelphous, John Holland, JFK Engineering, Sandvik, Thyssen Krupp, SDR, PIC, Fremantle Steel, Hallmark Cards, Watsons Foods, Humes, Rocla and others.

The Company was established over 100 years ago and has evolved into its current form as Adwest Group involved in Structural Steel Fabrication, Light Fabrication and the design and production of Wire and Mesh products. Adwest Group operates from custom built premises in Wangara, Western Australia.

CONTACT US

If you require further information regarding Adwest Group and our services or products please use the following contact details:

12 Callaway Street
Wangara WA 6065

PO Box 1224
Wangara WA 6947

Telephone:
08 9302 2322

Fax:
08 9302 2321

email:
info@adwestgroup.com.au